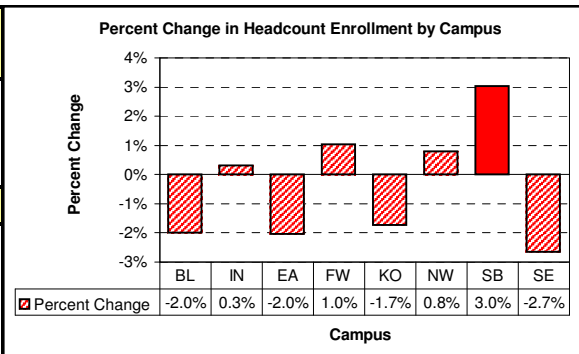


INDIANA UNIVERSITY SOUTH BEND

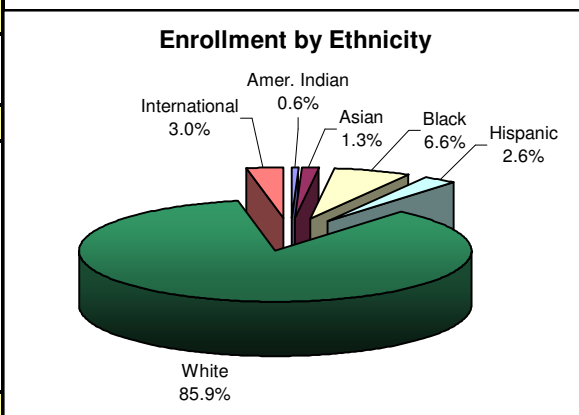
South Bend Enrollment Summary

Fall Semester, 2004

Fall 2004		% Change from Fall '03	
Headcount	7,501		3.0%
Credit Hours	70,519.0 *		4.1%
FTE	4,807.7 *		4.0%
Class Level	Headcount ^b	% Distribution	% Change
Freshman	1,997	34.1%	7.6%
Sophomore	1,431	24.5%	-5.6%
Junior	959	16.4%	-6.7%
Senior	1,464	25.0%	8.4%
Academic Level	Headcount	% Distribution	% Change
Undergraduate	5,851	78.0%	1.8%
Graduate	855	11.4%	-7.2%
Sp. Undergrad	471	6.3%	37.3%
Sp. Graduate	324	4.3%	21.8%
Gender	Headcount	% Distribution	% Change
Male	2,714	36.2%	2.1%
Female	4,787	63.8%	3.6%
Ethnicity	Headcount	% Distribution	% Change
Amer. Indian	40	0.55%	17.6%
Asian	95	1.31%	13.1%
Black	476	6.57%	5.1%
Hispanic	192	2.65%	-1.0%
White	6,228	85.90%	2.1%
International	219	3.02%	-30.9%
Unknown	251 ^a		
Full/Part-Time Undergraduates	Headcount	% Distribution	% Change
Full-Time	3,511 ^b	60.0%	3.0%
Part-Time	2,340 ^b	40.0%	0.0%
Residency	Headcount	% Distribution	% Change
Resident	7,113	94.8%	3.2%
Non-Resident	388	5.2%	0.8%
Purdue Statewide Technology	Fall 2004	% Change	
Headcount	208	-14.4%	
Credit Hours	1823	-10.5%	



Academic Level	Headcount	% Distribution	% Change
Undergraduate	61,710	87.5%	3.6%
Graduate	4,792	6.8%	-8.6%
Sp. Undergrad	2,423	3.4%	39.7%
Sp. Graduate	1,594	2.3%	35.5%



Fall 2004 Enrollment Highlights

* IUSB had record numbers in both credit hours and full-time equated (FTE) students.

* IUSB had the largest percent change in headcount enrollment (3.0%) of all the IU campuses.

* Sixty percent of the degree-seeking undergraduates are full-time, which is the first time in recent history.

* IUSB Record

(a) Unknowns are not counted in the distribution

(b) Degree seeking undergraduate students only

For more information contact:

(574) 520-4104

iusboir@iusb.edu

Office of Institutional Research

Indiana University South Bend

1700 Mishawaka Avenue

P.O. Box 7111

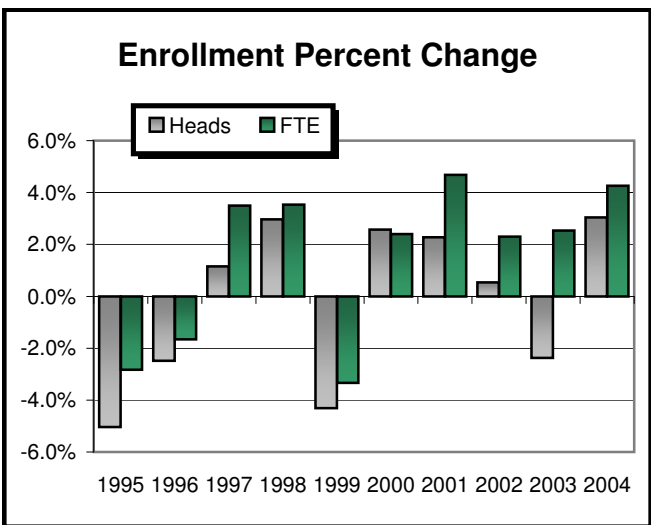
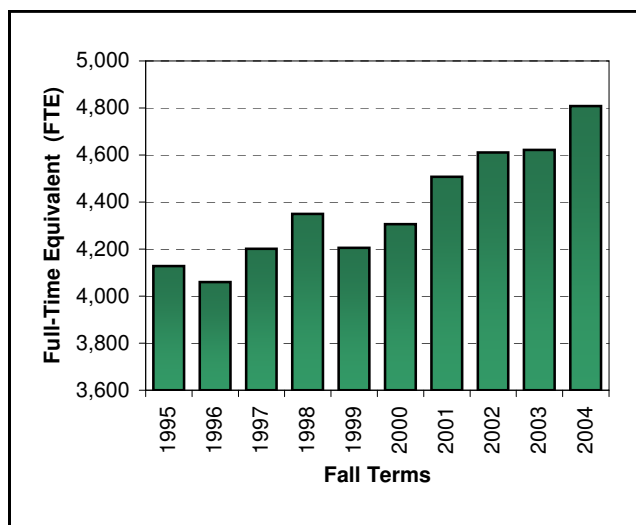
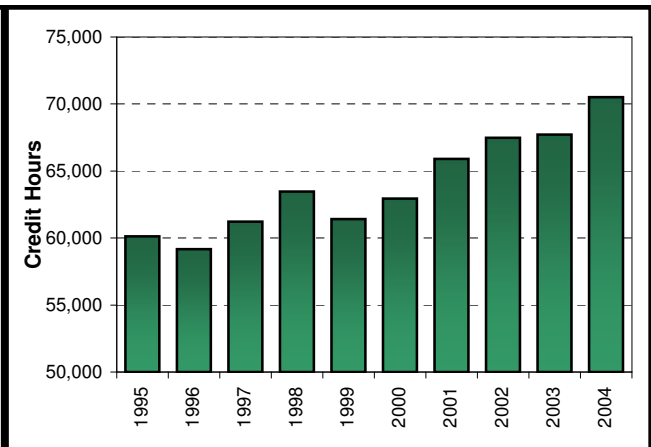
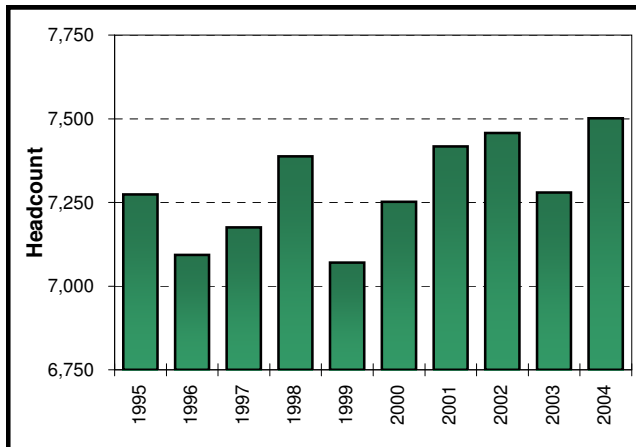
South Bend, IN 46634-7111

INDIANA UNIVERSITY SOUTH BEND

Campus Historical Enrollment Trends

By Headcount, Credit Hours, and FTE

	Headcount		Credit Hours		FTE		Average Cr/Head	
	#	% Change	#	% Change	#	% Change	#	% Change
	1995	7,274	-5.04%	60,136.0	-2.94%	4,127.8	-2.8%	8.27
1996	7,093	-2.49%	59,163.5	-1.62%	4,059.3	-1.7%	8.34	0.8%
1997	7,175	1.16%	61,231.0	3.49%	4,201.4	3.5%	8.54	2.4%
1998	7,388	2.97%	63,465.0	3.65%	4,350.1	3.5%	8.59	0.6%
1999	7,070	-4.30%	61,422.0	-3.22%	4,205.1	-3.3%	8.69	1.2%
2000	7,252	2.57%	62,953.0	2.49%	4,306.2	2.4%	8.68	-0.1%
2001	7,417	2.28%	65,894.0	4.67%	4,507.6	4.7%	8.88	2.3%
2002	7,457	0.54%	67,469.0	2.39%	4,611.0	2.3%	9.05	1.9%
2003	7,280	-2.37%	67,721.0	0.37%	4,621.7	0.2%	9.30	2.8%
2004	7,501	3.04%	70,519.0	4.13%	4,807.7	4.0%	9.40	1.1%



INDIANA UNIVERSITY SOUTH BEND

Campus Historical Enrollment Trends

ALL STUDENTS

By Residency

	Resident			Non-Resident		
	#	% of Total	% Change	#	% of Total	% Change
2000	6,842	94.3%	3.0%	410	5.7%	-4.7%
2001	6,975	94.0%	1.9%	442	6.0%	7.8%
2002	7,029	94.3%	0.8%	428	5.7%	-3.2%
2003	6,895	94.7%	-1.9%	385	5.3%	-10.0%
2004	7,113	94.8%	3.2%	388	5.2%	0.8%

By Gender

	Male			Female		
	#	% of Total	% Change	#	% of Total	% Change
2000	2,589	35.7%	2.4%	4,663	64.3%	2.7%
2001	2,689	36.3%	3.9%	4,728	63.7%	1.4%
2002	2,706	36.3%	0.6%	4,751	63.7%	0.5%
2003	2,659	36.5%	-1.7%	4,621	63.5%	-2.7%
2004	2,714	36.2%	2.1%	4,787	63.8%	3.6%

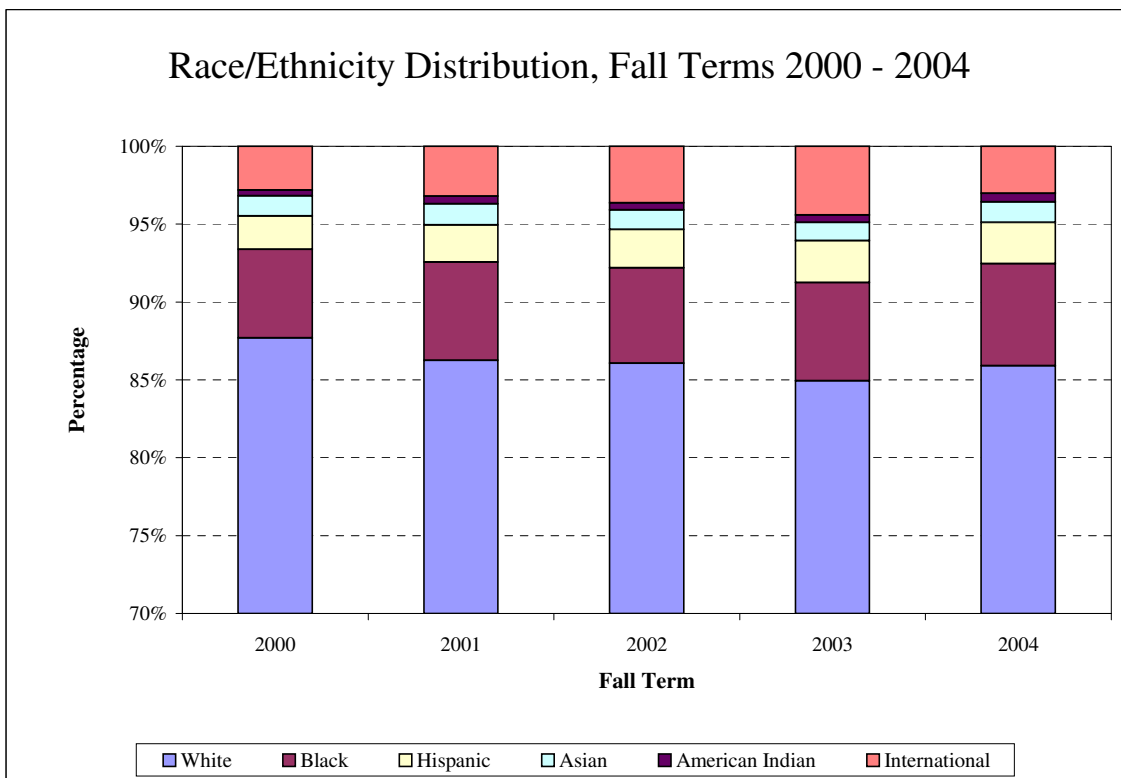
By Race/Ethnicity

	American Indian		Asian		Black		Hispanic		White		International		Unknowns	
	#	% Change	#	% Change	#	% Change	#	% Change	#	% Change	#	% Change	#	% Change
2000	27	42.1%	90	21.6%	402	-0.7%	151	20.8%	6,180	2.4%	198	-9.2%	203	5.7%
2001	35	29.6%	98	8.9%	456	13.4%	173	14.6%	6,239	1.0%	232	17.2%	184	-9.4%
2002	33	-5.7%	93	-5.1%	451	-1.1%	181	4.6%	6,335	1.5%	268	15.5%	96	-47.8%
2003	34	3.0%	84	-9.7%	453	0.4%	194	7.2%	6,098	-3.7%	317 ^a	18.3%	100	4.2%
2004	40	17.6%	95	13.1%	476	5.1%	192	-1.0%	6,228	2.1%	219	-30.9%	251	151.0%

Race/Ethnicity Distribution

	American Indian		Asian		Black		Hispanic		White		International		Minority	
	% of Total	Percentage Change	% of Total	Percentage Change	% of Total	Percentage Change	% of Total	Percentage Change	% of Total	Percentage Change	% of Total	Percentage Change	% of Total	Percentage Change
2000	0.38%	0.11%	1.28%	0.20%	5.70%	-0.18%	2.14%	0.33%	87.68%	-0.09%	2.81%	-0.4%	9.51%	0.45%
2001	0.48%	0.10%	1.35%	0.08%	6.30%	0.60%	2.39%	0.25%	86.26%	-1.43%	3.21%	0.4%	10.54%	1.03%
2002	0.45%	-0.04%	1.26%	-0.09%	6.13%	-0.18%	2.46%	0.07%	86.06%	-0.20%	3.64%	0.4%	10.30%	-0.24%
2003	0.47%	0.03%	1.17%	-0.09%	6.31%	0.18%	2.70%	0.24%	84.93%	-1.13%	4.42%	0.8%	10.65%	0.36%
2004	0.55%	0.08%	1.31%	0.14%	6.57%	0.26%	2.65%	-0.05%	85.90%	0.97%	3.02%	-1.4%	11.08%	0.42%

(a) Internally reported number of 208 international students reflects a significant difference with this terms officially reported number.



INDIANA UNIVERSITY SOUTH BEND

Campus Historical Enrollment Trends

	Freshman		Sophomore		Junior		Senior	
	#	% Change	#	% Change	#	% Change	#	% Change
2000	1,803	1.7%	1,301	-3.6%	828	-2.8%	1,203	10.2%
2001	2,034	12.8%	1,412	8.5%	924	11.6%	1,235	2.7%
2002	1,946	-4.3%	1,575	11.5%	929	0.5%	1,289	4.4%
2003	1,856	-4.6%	1,516	-3.7%	1,028	10.7%	1,350	4.7%
2004	1,997	7.6%	1,431	-5.6%	959	-6.7%	1,464	8.4%

Degree seeking student only

By Undergraduate Enrollment Status

	Full-Time UG			Part-Time UG			Percent of Total
	#	% of Total	% Change	#	% of Total	% Change	
1995	2,622	51.2%	-0.7%	2,498	48.8%	-12.0%	
1995	2,606	52.4%	-0.6%	2,366	47.6%	-5.3%	
1997	2,761	54.7%	5.9%	2,285	45.3%	-3.4%	
1998	2,885	55.5%	4.5%	2,316	44.5%	1.4%	
1999	2,806	55.4%	-2.7%	2,261	44.6%	-2.4%	
2000	2,830	55.1%	0.9%	2,305	44.9%	1.9%	
2001	3,127	55.8%	10.5%	2,478	44.2%	7.5%	
2002	3,241	56.5%	3.6%	2,498	43.5%	0.8%	
2003	3,409	59.3%	5.2%	2,341	40.7%	-6.3%	
2004	3,511	60.0%	3.0%	2,340	40.0%	0.0%	

Degree seeking student only

■ Full-Time UG ■ Part-Time UG

By Nondegree Class Standing

	Special UG		High School	
	#	% Change	#	% Change
2000	353	4.1%	409	38.2%
2001	127	-64.0%	338	-17.4%
2002	111	-12.6%	327	-3.3%
2003	85	-23.4%	258	-21.1%
2004	75	-11.8%	396	53.5%

New Undergraduate Matriculants

	All New UG Students		New UG Beginners	
	#	% Change	#	% Change
2000	1,815	9.9%	856	-1.5%
2001	1,787	-1.5%	1,029	20.2%
2002	1,657	-7.3%	932	-9.4%
2003	1,483	-10.5%	895	-4.0%
2004	1,813	22.3%	889 ^a	-0.7%

(a) Officially reported number from IU-URR.

New Beginner Cohort will be revised +22 students in future reporting.

Graduate Enrollment

	Degree-Seeking		Spec. Grad.	
	#	% Change	#	% Change
2000	972	6.1%	383	-15.3%
2001	955	-1.7%	392	2.3%
2002	962	-1.0%	321	-18.1%
2003	921	-3.6%	266	-17.1%
2004	855	-7.2%	324	21.8%