

INDIANA UNIVERSITY SOUTH BEND

South Bend Enrollment Summary

Fall Semester, 2006

Fall 2006		% Change from Fall '05	
Headcount	7,420		-0.5%
Credit Hours	69,981.0		-1.9%
FTE	4,765.4		-2.1%
Class Level	Headcount ^b	% Distribution	% Change
Freshman	2,065	36.1%	3.1%
Sophomore	1,370	24.0%	-3.5%
Junior	937	16.4%	-0.1%
Senior	1,342	23.5%	-8.0%
Academic Level	Headcount	% Distribution	% Change
Undergraduate	5,714	77.0%	-1.8%
Graduate	734	9.9%	-9.6%
Sp. Undergrad	657	8.9%	29.8%
Sp. Graduate	315	4.2%	-2.5%
Gender	Headcount	% Distribution	% Change
Male	2,813	37.9%	1.0%
Female	4,606	62.1%	-1.4%
Ethnicity	Headcount	% Distribution	% Change
Amer. Indian	38	0.53%	18.8%
Asian	98	1.37%	1.0%
Black	505	7.07%	3.9%
Hispanic	269	3.77%	21.7%
White	6,021	84.35%	-2.0%
International	207	2.90%	2.0%
Unknown	282 ^a		
Full/Part-Time Undergraduates	Headcount	% Distribution	% Change
Full-Time	3,543 ^b	62.0%	-2.0%
Part-Time	2,171 ^b	38.0%	-1.5%
Residency	Headcount	% Distribution	% Change
Resident	6,957	93.8%	-1.3%
Non-Resident	463	6.2%	13.8%
Purdue Statewide Technology	Headcount	% Change	
Headcount	193	0.0%	
Credit Hours	1714	-2.8%	

Academic Level	Credit Hours	% Distribution	% Change
Undergraduate	60,534	86.5%	-3.0%
Graduate	4,584	6.6%	-6.6%
Sp. Undergrad	3,449	4.9%	38.7%
Sp. Graduate	1,414	2.0%	-8.6%

Enrollment by Campus	One-Year % Change
BL	0.8%
IN	-0.6%
EA	-9.5%
FW Campus	-2.2%
KO	-5.9%
NW	-3.5%
SB	-0.5%
SE	0.3%

Enrollment by Ethnicity	% Distribution
White	84.4%
Hispanic	3.8%
Black	7.1%
Asian	1.4%
International	2.9%
Amer. Indian	0.5%

Fall 2006 Enrollment Highlights
⇒ After a record number of degrees awarded this past spring (1,236) a net decrease in enrollment, particularly among degree-seeking seniors (-8.0%) and graduates (-9.6%), was expected.
⇒ Strong new student cohorts, including a record new transfer cohort of 572, have mitigated the effect on overall enrollments of the record numbers graduating.
⇒ There was a 13.8% increase in non-resident students, which now comprise over 6 percent of the student body.

(a) Unknowns are not counted in the distribution

(b) Degree seeking undergraduate students only

For more information contact:

(574) 520-4104

iusboir@iusb.edu

Office of Institutional Research

Indiana University South Bend

1700 Mishawaka Avenue

P.O. Box 7111

South Bend, IN 46634-7111

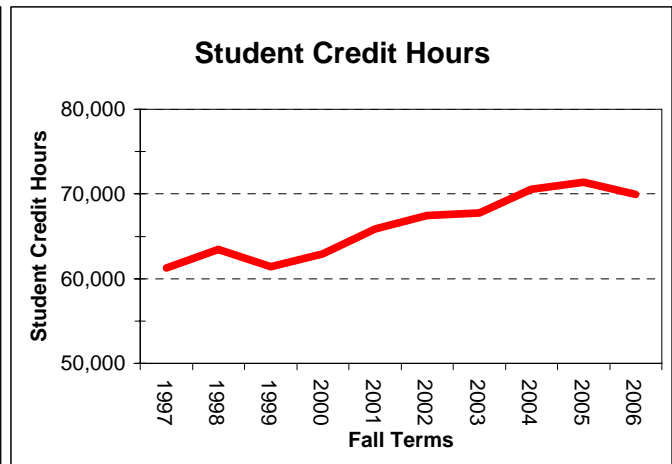
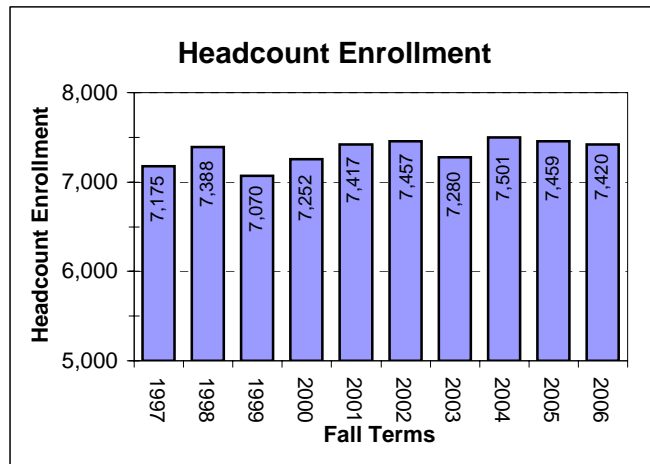
INDIANA UNIVERSITY SOUTH BEND

Campus Historical Enrollment Trends

OVERALL ENROLLMENT

By Headcount, Credit Hours, and FTE

Fall Term	Headcount		Credit Hours		FTE		Average Cr/Head	
	#	% Change	#	% Change	#	% Change	#	% Change
	1997	7,175	1.16%	61,231.0	3.49%	4,201.4	3.5%	8.54
1998	7,388	2.97%	63,465.0	3.65%	4,350.1	3.5%	8.59	0.6%
1999	7,070	-4.30%	61,422.0	-3.22%	4,205.1	-3.3%	8.69	1.2%
2000	7,252	2.57%	62,953.0	2.49%	4,306.2	2.4%	8.68	-0.1%
2001	7,417	2.28%	65,894.0	4.67%	4,507.6	4.7%	8.88	2.3%
2002	7,457	0.54%	67,469.0	2.39%	4,611.0	2.3%	9.05	1.9%
2003	7,280	-2.37%	67,721.0	0.37%	4,621.7	0.2%	9.30	2.8%
2004	7,501	3.04%	70,519.0	4.13%	4,807.7	4.0%	9.40	1.1%
2005	7,459	-0.56%	71,368.0	1.20%	4,865.5	1.2%	9.57	1.8%
2006	7,420	-0.52%	69,981.0	-1.94%	4,765.4	-2.1%	9.43	-1.4%



By Academic Group

ACADEMIC GROUP	Fall 2002	Fall 2003	Fall 2004	Fall 2005	Fall 2006	Prior Yr.	% Change
						Chng.	
Administrative Tracking Group *	548	418	549	559	713	154	27.5%
Col of Liberal Arts & Science	1,600	1,688	1,734	1,731	1,769	38	2.2%
Dental Auxiliary Education	210	227	228	231	228	-3	-1.3%
Div of Allied Health Science	225	244	232	228	221	-7	-3.1%
Division of Labor Studies	9	7	7	4	6	2	50.0%
E. M. Raclin Sch of the Art	481	463	448	424	453	29	6.8%
Grad Sch-Liberal Arts & Sc	53	69	91	87	92	5	5.7%
Public & Environmental Affair	394	399	404	381	358	-23	-6.0%
School of Business & Economic	1,291	1,240	1,235	1,274	1,302	28	2.2%
School of Continuing Studie	331	304	307	327	313	-14	-4.3%
School of Educator	1,803	1,678	1,640	1,513	1,290	-223	-14.7%
School of Nursing	407	451	531	581	561	-20	-3.4%
School of Social Work	101	92	95	119	114	-5	-4.2%
University Divisor	4						
UNIVERSITY TOTALS	7,457	7,280	7,501	7,459	7,420	-39	-0.5%

* Transient and non-degree students

INDIANA UNIVERSITY SOUTH BEND

Campus Historical Enrollment Trends

ALL STUDENTS

By Residency

	Resident			Non-Resident		
	#	% of Total	% Change	#	% of Total	% Change
2002	7,029	94.3%	0.8%	428	5.7%	-3.2%
2003	6,895	94.7%	-1.9%	385	5.3%	-10.0%
2004	7,113	94.8%	3.2%	388	5.2%	0.8%
2005	7,052	94.5%	-0.9%	407	5.5%	4.9%
2006	6,957	93.8%	-1.3%	463	6.2%	13.8%

By Gender

	Male			Female		
	#	% of Total	% Change	#	% of Total	% Change
2002	2,706	36.3%	0.6%	4,751	63.7%	0.5%
2003	2,659	36.5%	-1.7%	4,621	63.5%	-2.7%
2004	2,714	36.2%	2.1%	4,787	63.8%	3.6%
2005	2,786	37.4%	2.7%	4,673	62.6%	-2.4%
2006	2,813	37.9%	1.0%	4,606	62.1%	-1.4%

By Race/Ethnicity

	American Indian		Asian		Black		Hispanic		White		International ^a		Unknowns	
	#	% Change	#	% Change	#	% Change	#	% Change	#	% Change	#	% Change	#	% Change
2002	33	-5.7%	93	-5.1%	451	-1.1%	181	4.6%	6,335	1.5%	268	15.5%	96	-47.8%
2003	34	3.0%	84	-9.7%	453	0.4%	194	7.2%	6,098	-3.7%	317	18.3%	100	4.2%
2004	40	17.6%	95	13.1%	476	5.1%	192	-1.0%	6,228	2.1%	219	-30.9%	251	151.0%
2005	32	-20.0%	97	2.1%	486	2.1%	221	15.1%	6,143	-1.4%	203	-7.3%	277	10.4%
2006	38	18.8%	98	1.0%	505	3.9%	269	21.7%	6,021	-2.0%	207	2.0%	282	1.8%

Race/Ethnicity Distribution

	American Indian		Asian		Black		Hispanic		White		International ^a		Minority	
	% of Total	Percentage Change	% of Total	Percentage Change	% of Total	Percentage Change	% of Total	Percentage Change	% of Total	Percentage Change	% of Total	Percentage Change	% of Total	Percentage Change
2002	0.45%	-0.04%	1.26%	-0.09%	6.13%	-0.18%	2.46%	0.07%	86.06%	-0.20%	3.64%	0.4%	10.30%	-0.24%
2003	0.47%	0.03%	1.17%	-0.09%	6.31%	0.18%	2.70%	0.24%	84.93%	-1.13%	4.42%	0.8%	10.65%	0.36%
2004	0.55%	0.08%	1.31%	0.14%	6.57%	0.26%	2.65%	-0.05%	85.90%	0.97%	3.02%	-1.4%	11.08%	0.42%
2005	0.45%	-0.11%	1.35%	0.04%	6.77%	0.20%	3.08%	0.43%	85.53%	-0.37%	2.83%	-0.2%	11.64%	0.56%
2006	0.53%	0.09%	1.37%	0.02%	7.07%	0.31%	3.77%	0.69%	84.35%	-1.18%	2.90%	0.1%	12.75%	1.11%

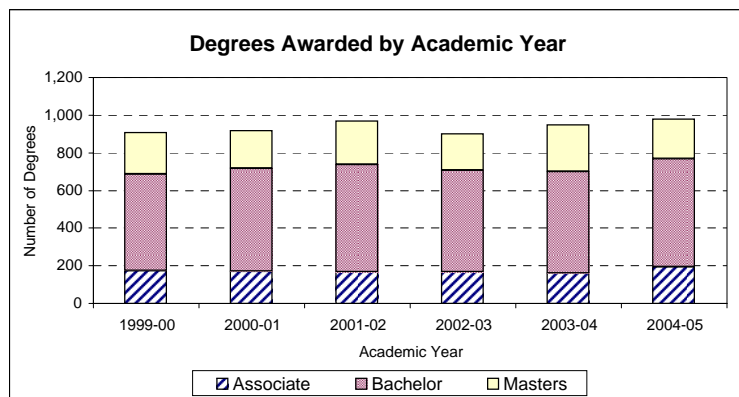
(a) There is an acknowledged difference in reported numbers between the Office of International Students and the IU Reporting and Research Office. IU Reporting and Research numbers are used in this report.

PERSISTENCE AND GRADUATION

Cohort ^b	*FTB Headcount	Persistence to Spring	Persistence to 2nd Year	6-Year Grad. Rates
1992	629	83.0%	64.0%	22.5%
1993	554	80.4%	64.2%	25.0%
1994	559	83.8%	60.6%	26.3%
1995	626	81.7%	59.2%	21.9%
1996	593	81.3%	57.5%	25.3%
1997	629	83.0%	64.2%	27.8%
1998	732	83.1%	63.5%	23.1%
1999	637	83.0%	64.5%	26.8%
2000	638	82.3%	64.4%	
2001	751	84.8%	66.4%	
2002	659	86.3%	69.5%	
2003	707	83.7%	65.6%	
2004	706	83.0%	64.4%	
2005	806	81.8%		

*FTB (Full-Time Beginners)

Acad. Year	Associate Degree	Bachelor Degree	Master's Degree	Total Degrees	Certificates	Total Awards
1999-00	175	510	224	909	5	914
2000-01	170	548	200	918	5	923
2001-02	167	572	231	970	9	979
2002-03	166	542	194	902	32	934
2003-04	161	538	251	950	22	972
2004-05	194	575	209	978	33	1011



^b This table summarizes the data submitted to IPEDS with the Graduation Rates Survey. The cohort is defined as full-time beginner (FTB), degree-seeking students who matriculated in either of the preceding summer sessions or in the fall, or students who began their coursework in high school and enrolled as traditional college students in the fall. These graduation rates combine all degree-seeking FTB students and provide the number of students who earned their degree within 150% of program length.

INDIANA UNIVERSITY SOUTH BEND

Campus Historical Enrollment Trends

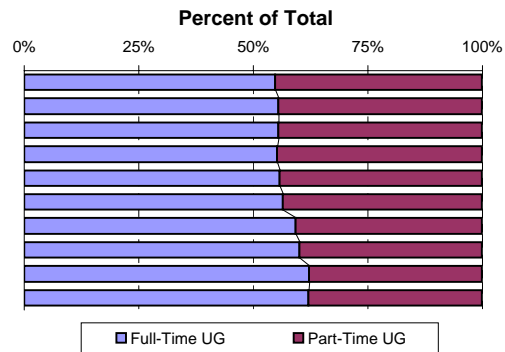
DEGREE-SEEKING STUDENTS

Degree-Seeking Students by Class Level

	Freshman		Sophomore		Junior		Senior		Graduate	
	#	% Change	#	% Change	#	% Change	#	% Change	#	% Change
2002	1,946	-4.3%	1,575	11.5%	929	0.5%	1,289	4.4%	962	0.7%
2003	1,856	-4.6%	1,516	-3.7%	1,028	10.7%	1,350	4.7%	921	-4.3%
2004	1,997	7.6%	1,431	-5.6%	959	-6.7%	1,464	8.4%	855	-7.2%
2005	2,001	0.2%	1,419	-0.8%	938	-2.2%	1,460	-0.3%	812	-5.0%
2006	2,065	3.2%	1,370	-3.5%	937	-0.1%	1,342	-8.1%	734	-9.6%

Degree-Seeking Undergraduates by Enrollment Status

Fall Term	Full-Time UG			Part-Time UG		
	#	% of Total	% Change	#	% of Total	% Change
1997	2,761	54.7%	5.9%	2,285	45.3%	-3.4%
1998	2,885	55.5%	4.5%	2,316	44.5%	1.4%
1999	2,806	55.4%	-2.7%	2,261	44.6%	-2.4%
2000	2,830	55.1%	0.9%	2,305	44.9%	1.9%
2001	3,127	55.8%	10.5%	2,478	44.2%	7.5%
2002	3,241	56.5%	3.6%	2,498	43.5%	0.8%
2003	3,409	59.3%	5.2%	2,341	40.7%	-6.3%
2004	3,511	60.0%	3.0%	2,340	40.0%	0.0%
2005	3,615	62.1%	3.0%	2,203	37.9%	-5.9%
2006	3,543	62.0%	-2.0%	2,171	38.0%	-1.5%



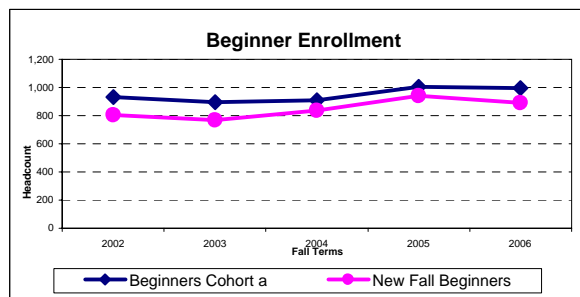
NEW STUDENTS

New Fall Students (a.k.a. New Fall Matriculates)

Fall Term	New Undergraduate				New Graduate			Total New
	Beginners	Transfers	Non-Degree	Subtotal UG	Degree	Non-Degree	Subtotal GR	
2002	804	406	316	1,526	66	65	131	1,657
2003	767	361	258	1,386	51	46	97	1,483
2004	836	436	383	1,655	120	93	213	1,868
2005	942	425	0	1,367	72	0	72	1,439
2006	893	454	0	1,347	99	0	99	1,446

Note: Beginning in Fall 2005 non-degree students will no longer be counted among the matriculates for reporting purposes.

Cohort	Beginners Cohort ^a		Transfer Cohort ^b	
	#	% Change	#	% Change
1997	843	0.4%	339	31.4%
1998	983	16.6%	345	1.8%
1999	869	-11.6%	330	-4.3%
2000	856	-1.5%	396	20.0%
2001	1,029	20.2%	409	3.3%
2002	932	-9.4%	443	8.3%
2003	895	-4.0%	422	-4.7%
2004	910	1.7%	549	30.1%
2005	1,006	10.5%	529	-3.6%
2006	994	-1.2%	572	8.1%



(a) **Beginners Cohort** is defined as degree-seeking undergraduates who begin in the fall or in either of the preceeding summer sessions. Students who earned college credit from IU in high school and are currently enrolled are also included as beginners. These students comprise the "cohorts" that are tracked for retention and graduation rates reporting.

(b) **Transfer Cohort** is defined as degree-seeking undergraduates who begin in the fall or in either of the preceeding summer sessions, and who have previously attended another institution for higher education. These students are tracked by Indiana University, but they are not reported externally in any formal capacity.