



INDIANA UNIVERSITY SOUTH BEND

# EMERGENCY PREPAREDNESS

PLANNING & COORDINATION

COMMUNICATIONS

POLICIES & PROCEDURES

CONTINUITY OF

UNIVERSITY OPERATIONS  
DEPARTMENT OPERATIONS  
STUDENT LEARNING

**INDIANA UNIVERSITY  
COMPREHENSIVE EMERGENCY MANAGEMENT PLAN  
(CEMP)  
FOR  
SOUTH BEND CAMPUS**

---

**INDIANA UNIVERSITY  
PANDEMIC INFLUENZA PLAN  
FOR  
SOUTH BEND CAMPUS**

PLANNING & COORDINATION

COMMUNICATIONS

POLICIES & PROCEDURES

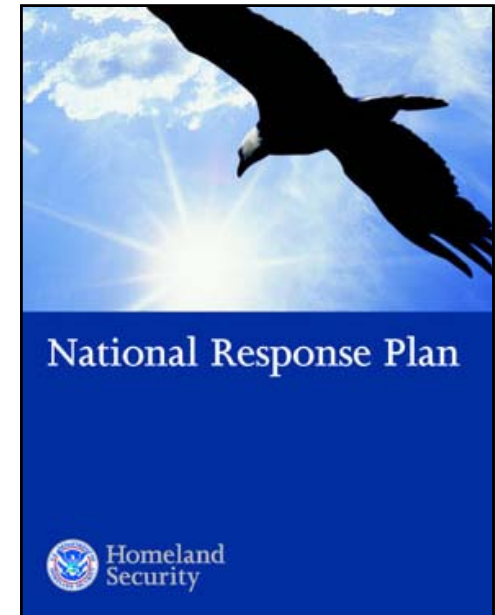
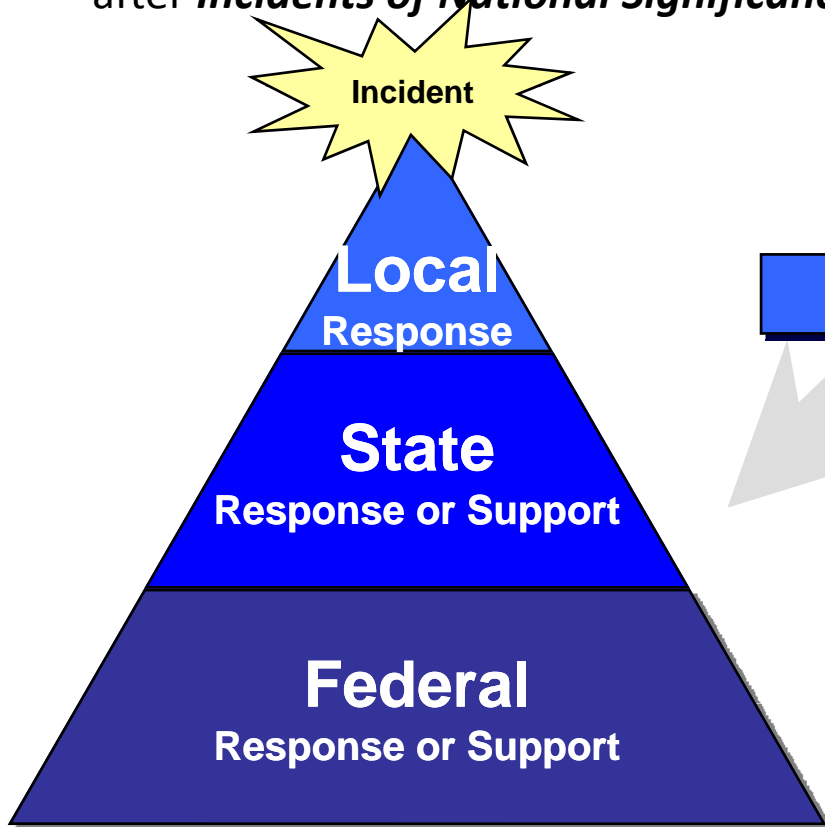
CONTINUITY OF

UNIVERSITY OPERATIONS  
DEPARTMENT OPERATIONS  
STUDENT LEARNING

# National Response Plan (NRP)

## National Response Plan (NRP)

Integrates and applies federal resources, knowledge, and abilities before, during, and after *Incidents of National Significance*



## National Incident Management System (NIMS)

Aligns command, control, organization structure, terminology, communication protocols, and resources for *all events*



### **Who has to take the NIMS and ICS training?**

All federal, state, local, tribal, private sector and non-governmental personnel with a direct role in emergency management and response must be NIMS and ICS trained. This includes all emergency services related disciplines such as EMS, hospitals, public health, fire service, law enforcement, public works/utilities, skilled support personnel, and other emergency management response, support and volunteer personnel, as follows:

#### Entry Level

- FEMA IS-700: NIMS, An Introduction
- ICS-100: Introduction to ICS or equivalent

#### First Line, Single Resource, Field Supervisors

- IS-700, ICS-100 and ICS-200: Basic ICS or its equivalent

#### Middle Management: Strike Team Leaders, Division Supervisors, EOC Staff, etc.

- IS-700, IS-800 NRP, ICS-100, ICS-200 *and in FY07, ICS-300*

#### Command and General Staff; Area, Emergency and EOC Managers

- IS-700, IS-800, ICS-100, ICS-200 *and in FY07, ICS-300 and ICS-400*



<http://training.fema.gov/index.asp>



IU Notify

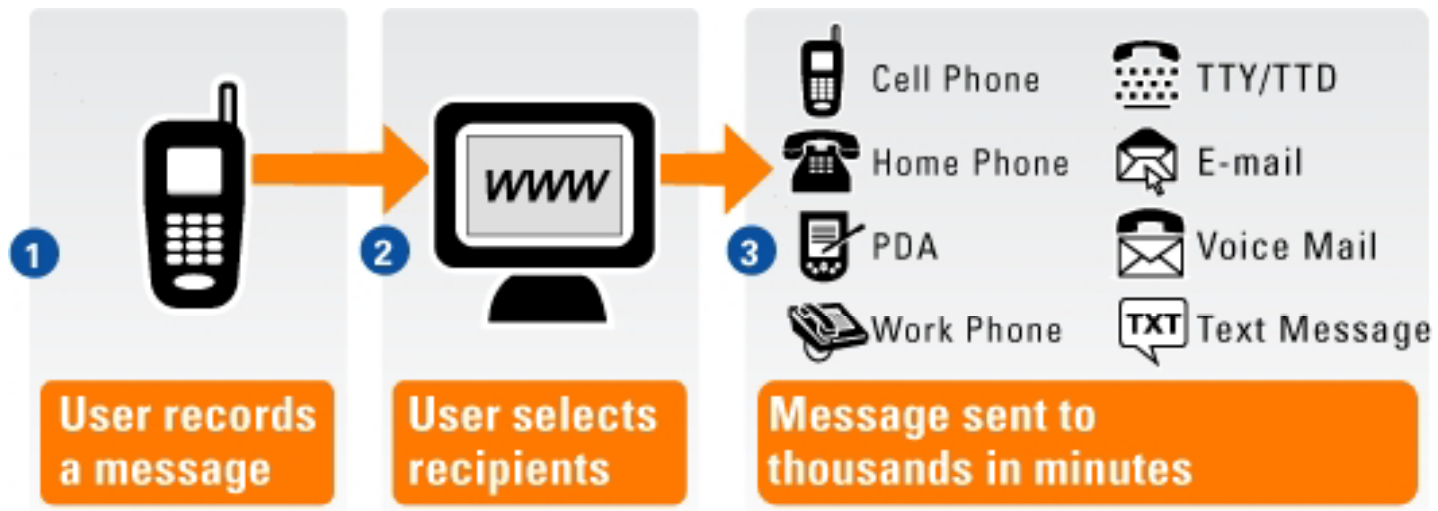


**Connect-ED®**

Higher Education



Reach your entire campus community in minutes with voice, e-mail, and text/SMS.



**INDIANA UNIVERSITY  
COMPREHENSIVE EMERGENCY MANAGEMENT PLAN  
(CEMP)  
FOR  
SOUTH BEND CAMPUS**

---

The CEMP is a strategic document created for the purpose of managing major emergencies and crisis situations in an organized manner.

It is an all-risk emergency plan that addresses campus-wide crisis and disaster planning, building specific emergency planning and department/unit contingency planning.

It integrates university departments/units and other resources into a coordinated response effort to limit loss of life and property.....

The CEMP utilizes the four phases of Emergency Management: ***Mitigation, Preparedness, Response*** and ***Recovery***.

The CEMP utilizes a modified version of the State's Emergency Support Function (ESF) format.

Eighteen functional tasks have been identified as actual or potential requirements during emergency situations.

The functional tasks are called Emergency Support Functions.

1. Communication and Warning
2. Information and Planning
3. Resource Support
4. Public Information
5. Hazardous Material
6. Health and Medical
7. Search and Rescue
8. Law Enforcement
9. Fire Fighting
10. Evacuation
11. Shelter and Mass Care
12. Food and Water
13. Animal Health and Care
14. Donations and Volunteer Management
15. Damage Assessment
16. Energy
17. Transportation
18. Public Works and Engineering

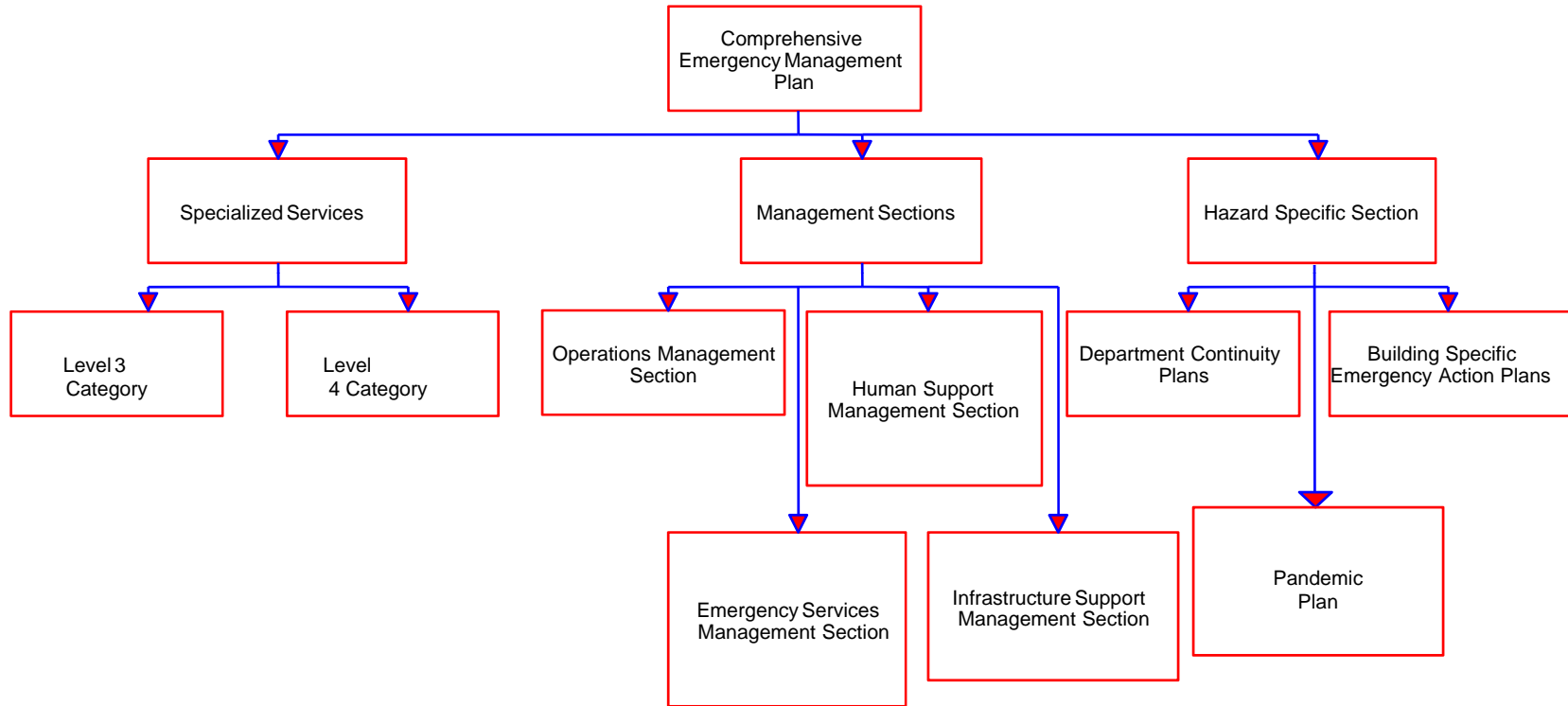
## Strategic Crisis Planning Board – Chancellor’s Cabinet

### Crisis Management Team –

- Director of Safety & Security
- Director of Facilities Management
- Environmental Health & Safety Manager
- Senior Director, User Support and I.T. Communications
- Director, Counseling Center
- Director, Wellness Center
- Director of Communications & Marketing

The Strategic Crisis Planning Board provides oversight to the Crisis Management Team and communicates to sources outside the IU South Bend campus.

The members of the Crisis Management Team represent four management sections: ***Operations, Emergency Services, Human Support and Infrastructure Support***.

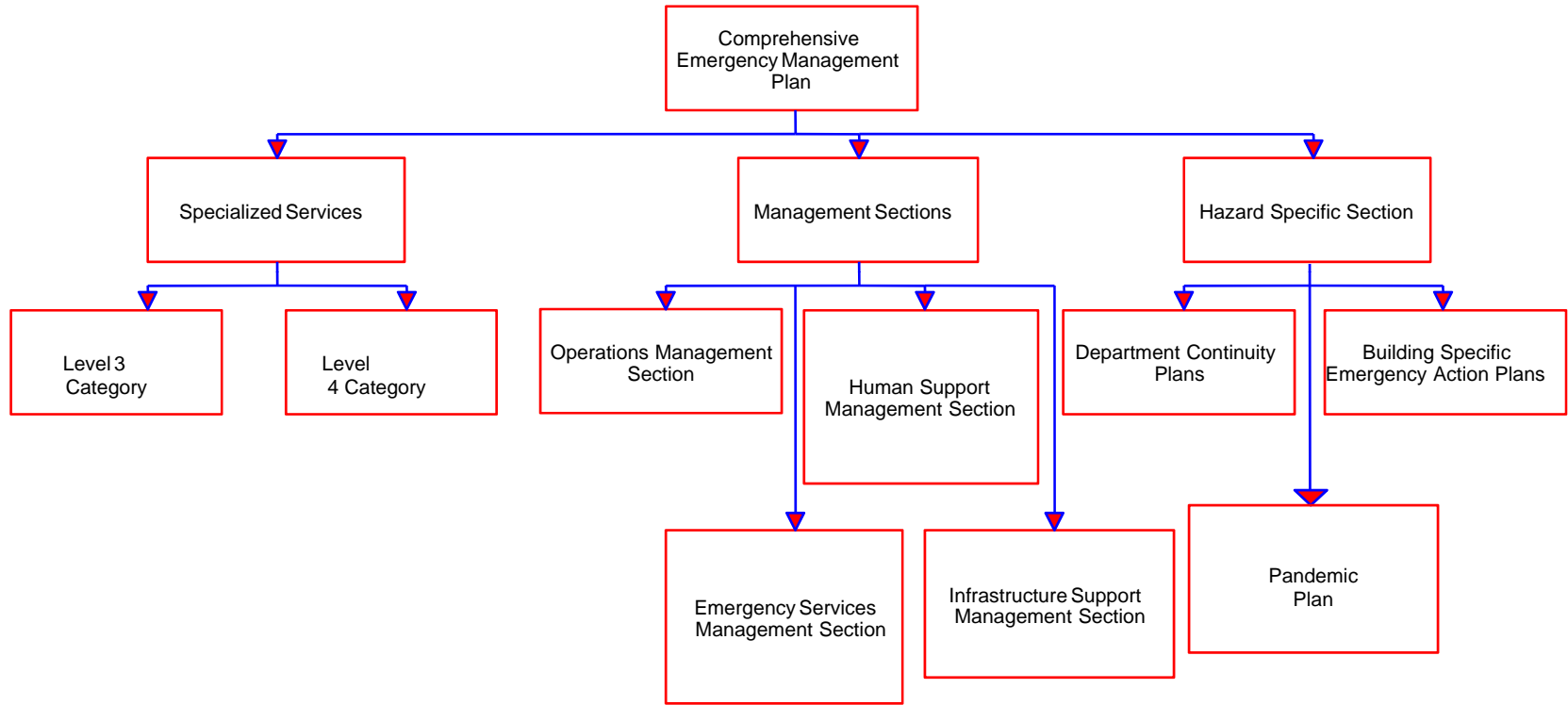


Level 1: Needed for life safety and security

Level 2: Needed for the continuation of critical infrastructure functions.

Level 3: Needed for the continuation of critical business functions.

Level 4: All other units/departments





INDIANA UNIVERSITY SOUTH BEND

## Campus Police Department

Top of Form

Search:

Bottom of Form

[Important Telephone Numbers](#)

[Emergency Preparedness](#)

[Emergency Action Plan](#)

[Emergency Action Plan Contact List](#)

[Elkhart Emergency Action Plan](#)

[Emergency Procedures Handbook](#)

[Elkhart Emergency Procedures Handbook](#)

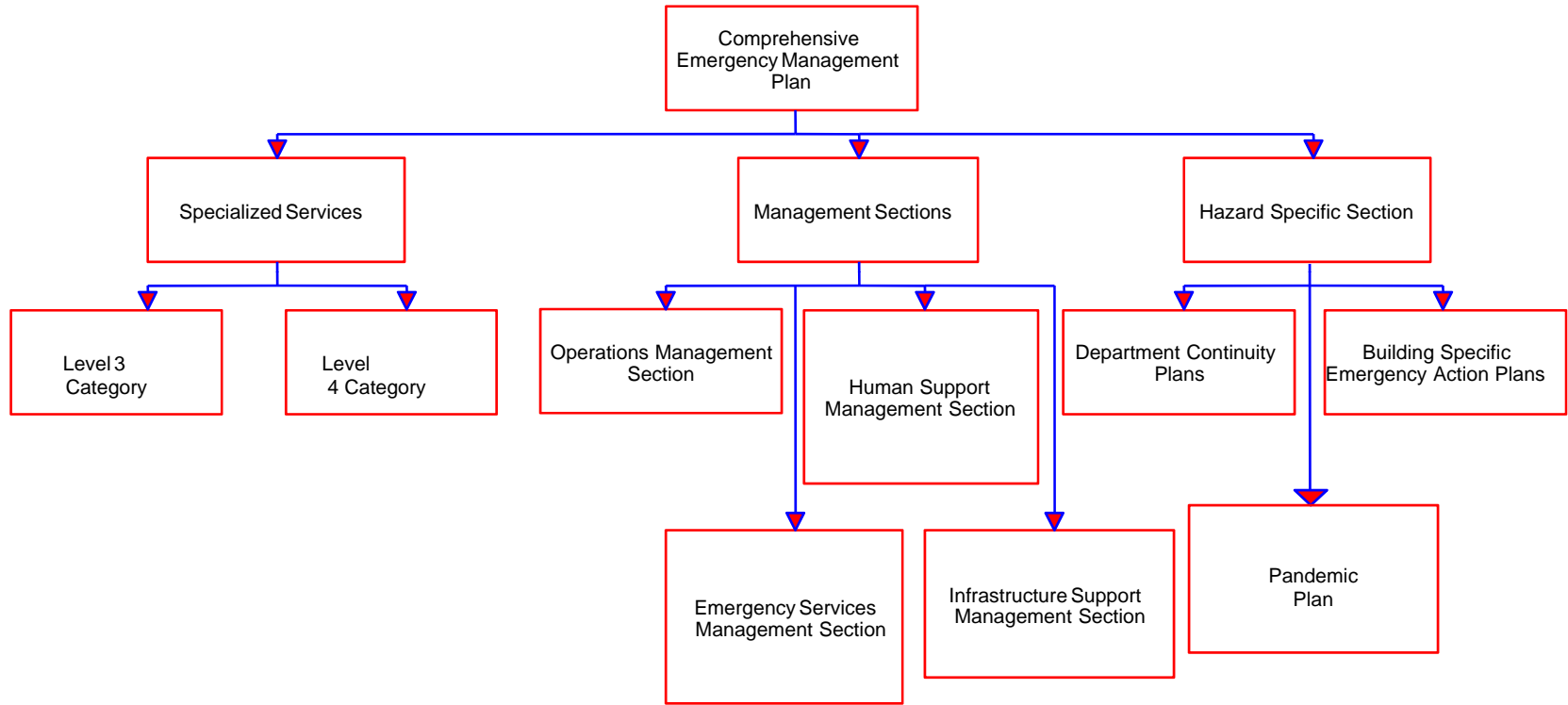
[Campus Emergency Phones](#)

[Clery Security Report](#)

[Crime Prevention Information](#)

[Victim Assistance](#)

[Crime Alerts](#)



## Campus Emergency Planning Group

1. Communication and Warning	PD, PAUA	K. Baierl, M. Gersey
2. Information and Planning	All Depts	
3. Resource Support	All Depts	
4. Public Information	PAUA	K. Baierl
5. Hazardous Material	EH&S	J. Einspahr
6. Health and Medical	Wellness Cnt. Counseling Cnt.	L. Hieronymus J. Hurst
7. Search and Rescue	PD	M. Gersey
8. Law Enforcement	PD	M. Gersey
9. Fire Fighting	SBFD, PD	M. Gersey, J. Einspahr
10. Evacuation	PD	M. Gersey
11. Shelter and Mass Care	Facilities	M. Prater
12. Food and Water	Dining Services	S. Rose
13. Animal Health and Care	Biology	P. Bushnell
14. Donations and Volunteer Mngmt.	PAUA	I. Sheffer
15. Damage Assessment	Facilities	M. Prater
16. Energy	Facilities	M. Prater
17. Transportation	Parking	M. Gersey
18. Public Works and Engineering	Facilities	M. Prater

## Campus Emergency Planning Group (continued)

19. University Policies	Human Resources	S. Ermeti
20. Faculty	Academic Affairs	A. Guillaume
21. Students	Student Services	K. White
22. International Students	Intr'l. Student Srvs.	J. Williams
23. Purchasing	Purchasing	D. Richards
24. Accounting – Finances	Fiscal Affairs/Accounting	K. Vargo
25. Child Care	Child Development Cnt.	M. Wilham
26. Laboratories	Lab Supervisors	P. Bushnell
27. Special Events	PAUA	M. Muldoon



INDIANA UNIVERSITY SOUTH BEND

PLANNING & COORDINATION

COMMUNICATIONS

POLICIES & PROCEDURES

CONTINUITY OF

UNIVERSITY OPERATIONS  
DEPARTMENT OPERATIONS  
STUDENT LEARNING



INDIANA UNIVERSITY SOUTH BEND

QUESTIONS?